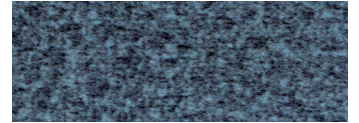
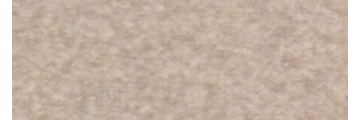




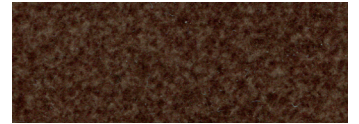
### Standard Fabrics:



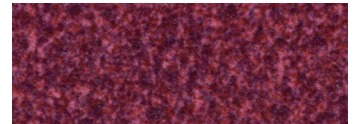
Calypso (TCP)



Camel (TCM)



Hazelnut (THA)



Shiraz (TSZ)



Sterling (TST)

This fabric has a modern, updated look with rich color options. It features our exclusive SofTouch™ with Stain Defense coating.

\* An upcharge will apply for all crossover fabrics.

## EZ Sleeper PR735-MLA



*Comfort Zone*™  
by GOLDEN

The PR735 EZ Sleeper is just for you! This luxury power lift recliner combines a contemporary design with our patented MaxiComfort® positioning for unmatched style and comfort. Its ultramodern, clean lines pair perfectly with a contemporary décor, especially in smaller spaces. Enjoy the long-lasting comfort of this rounded, track arm style chair with a tailored seam back. Your choice of luxurious fabrics and MaxiComfort® positioning will make this chair the favorite seat in the house.

### Standard Features:

- Patented MaxiComfort® Positioning
- Programmable AutoDrive™ Hand Control
- Extra Pocket



# MAXICOMFORT® Series PR735

Model Number	PR735-MLA
Size	Medium/Large
Class II Medical Device	Yes
Weight Capacity	375 LB
Positioning	MaxiComfort
Comfort Zone(s)	2
Twilight Technology	No
ZG+	No
Chaise Seat	Yes
Pocketed Coil Seat	Yes
Back Type	Seam
Removable Back Type	Bolt
Head Rest Cover	No
Arm Rest Covers	No
Overall Width	34.5"
Overall Height	45.5"
Seat Width	21.5"
Floor to Top of Seat	20"
Seat Depth	22.5"
Seat to Top of Back	30"
Seat to Top of Arm	7.5"
Distance Required from Wall Reclined	20"
Extension Reclined from Back of Seat to End of Foot Rest	47"
Life Time Warranty, Chair Frame, Lift Frame, Recline Mechanism	Yes
Warranty on Electrical Parts	3 YR
Pro Rated Years 4 Thru 7	Yes
Warranty on Mechanical Labor	3 YR
Warranty on Electrical Labor	1 YR
Hand Control Routing	Inside Pocket
Extra Pocket Option	Standard
Heat & Vibrating Massage Option	Yes
Heat Wave Technology Option	No
Articulating Headrest Option	No
Power Adjustable Lumbar Option	No
Foot Rest Extension Option	Yes
Straight Lift Option	Standard
USB Charging Port	No
Battery Backup	9 volt
SmartTek Diagnostic System	Standard
Place of Origin	USA



Shown in Shiitake\*

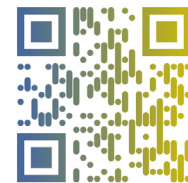


## Comfort Zone™ by GOLDEN

**Comfort Zones 1 & 2** work together to create individualized wellness positioning and comfort. Each Comfort Zone can be adjusted independently by using the exclusive AutoDrive hand control.



**WE PATENTED COMFORT™**



Scan with your smartphone camera to learn more about Comfort Zone by Golden.



Phone: 800-624-6374  
Fax: 800-628-5165  
www.goldentech.com



Literature is current at time of printing. Golden Technologies reserves the right to make changes to the product or literature at any time.

Sizes may vary depending on fabric, filling material, upholstery and carpet thickness. All measurements taken on concrete floor using levels and metal rulers.



Complies with  
UL 73 and  
CSA C22.2 No. 68



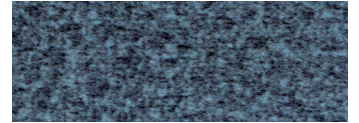
www.facebook.com/goldentechnologies

SHT-PR735-122722

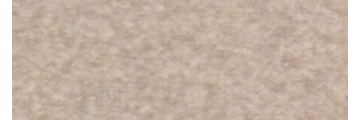




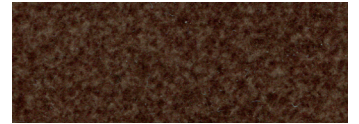
### Standard Fabrics:



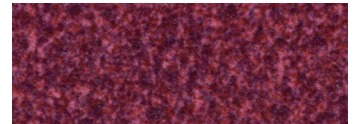
Calypso (TCP)



Camel (TCM)



Hazelnut (THA)



Shiraz (TSZ)



Sterling (TST)

This fabric has a modern, updated look with rich color options. It features our exclusive SofTouch™ with Stain Defense coating.

\* An upcharge will apply for all crossover fabrics.

## EZ Sleeper Slim PR763-MED



*Comfort Zone*<sup>™</sup>  
by GOLDEN

Experience comfort like never before with the EZ Sleeper Slim by Golden. This model offers a modern style track arm design, while the plush back, chaise pad and supportive pocketed coil springs provide hours of relaxing comfort. The EZ Sleeper Slim comes standard with our 2-Zone Comfort Zone positioning system, which features our patented MaxiComfort® positioning operated by our programmable AutoDrive™ hand control.

### Standard Features:

- Patented MaxiComfort® Positioning
- Programmable AutoDrive™ Hand Control
- Extra Pocket
- SmartTek® Diagnostic System



# MAXICOMFORT® Series PR763

Model Number	PR763-MED
Size	Medium
Class II Medical Device	Yes
Weight Capacity	375 LB
Positioning	MaxiComfort
Comfort Zone(s)	2
Twilight Technology	No
ZG+	No
Chaise Seat	Yes
Pocketed Coil Seat	Yes
Back Type	Seam
Removable Back Type	Quick Release
Head Rest Cover	No
Arm Rest Covers	No
Overall Width	33"
Overall Height	45"
Seat Width	23"
Floor to Top of Seat	20"
Seat Depth	20.5"
Seat to Top of Back	30"
Seat to Top of Arm	8"
Distance Required from Wall Reclined	23"
Extension Reclined from Back of Seat to End of Foot Rest	43"
Life Time Warranty, Chair Frame, Lift Frame, Recline Mechanism	Yes
Warranty on Electrical Parts	3 YR
Pro Rated Years 4 Thru 7	Yes
Warranty on Mechanical Labor	3 YR
Warranty on Electrical Labor	1 YR
Hand Control Routing	Inside Pocket
Extra Pocket Option	Standard
Heat & Vibrating Massage Option	Yes
Heat Wave Technology Option	No
Articulating Headrest Option	No
Power Adjustable Lumbar Option	No
Foot Rest Extension Option	Yes
Straight Lift Option	Standard
USB Charging Port	No
Battery Backup	9 volt
SmartTek® Diagnostic System	Standard
Place of Origin	USA



Shown in Brisa® Cream\*

All Golden lift chairs are Class II Medical Devices.

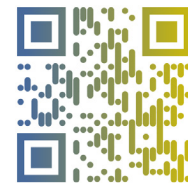


## Comfort Zone™ by GOLDEN

**Comfort Zones 1 & 2** work together to create individualized wellness positioning and comfort. Each Comfort Zone can be adjusted independently by using the exclusive AutoDrive hand control.



**WE PATENTED COMFORT™**



Scan with your smartphone camera to learn more about Comfort Zone by Golden.



Phone: 800-624-6374  
Fax: 800-628-5165  
www.goldentech.com



Literature is current at time of printing. Golden Technologies reserves the right to make changes to the product or literature at any time.

Sizes may vary depending on fabric, filling material, upholstery and carpet thickness. All measurements taken on concrete floor using levels and metal rulers.



Complies with  
UL 73 and  
CSA C22.2 No. 68



www.facebook.com/goldentechnologies

SHT-PR763-010824





Shown in Shiitake\*

## Standard Fabrics:



Bourbon



Smoke

This microsuede fabric is a stylish alternative to suede with the soft feel of natural leather but none of its drawbacks. Long-lasting and stain-resistant, it is perfect for furniture that will see a high volume of use or spills.

\* An upcharge will apply for all crossover fabrics.

## Quick Ship?

Check real-time inventory at [webportalgt.com](http://webportalgt.com). (Access available for Golden retailers only.)

## EZ Sleeper PR761



*Comfort Zone*™  
by GOLDEN

The EZ Sleeper is a luxury power lift recliner featuring a modern look with a tailored back and stylish track arm design, while the plush chaise pad and pocketed coil spring seat provide hours of unmatched comfort. Positioning options are endless with our 5-zone positioning system, which includes our patented Twilight Technology, patented MaxiComfort® Positioning, adjustable headrest and lumbar support. Healthy benefits include being able to elevate the feet above the heart while experiencing a feeling of weightlessness.

## Standard Features:

- Patented Twilight Tilt Technology
- Patented MaxiComfort® Positioning
- Adjustable Headrest
- Adjustable Lumbar
- Programmable AutoDrive™ Hand Control
- USB Charging Port
- Extra Pocket



# MAXICOMFORT® Series PR761

Model Number	PR761-MLA
Size	Medium/Large
Weight Capacity	375 LBS
Positioning	Maxicomfort
Comfort Zone(s)	5
Twilight Technology	YES
Chaise Seat	YES
Pocketed Coil Seat	YES
Back Type	Seam
Removable Back Option	NO
Head Rest Cover	NO
Arm Rest Covers	NO
Overall Width	34"
Overall Height	46"
Width Between Arms	22"
Floor to Top of Seat	21"
Seat Depth	21"
Seat to Top of Back	30"
Seat to Top of Arm	8"
Distance Required from Wall Reclined	24"
Extension Reclined from Back of Seat to End of Foot Rest	43"
Life Time Warranty, Chair Frame, Lift Frame, Recline Mechanism	YES
Warranty on Electrical parts	3 YR
Pro Rated Years 4 Thru 7	YES
Warranty on Mechanical Labor	3 YR
Warranty on Electrical Labor	1 YR
Hand Control Routing	Inside Arm
Extra Pocket Option	Standard
Heat & Massage Option	NO
Articulating Headrest Option	Standard
Adjustable Lumbar Option	Standard
AutoFlex Option	NO
Foot Rest Extension Option	NO
Straight Lift Option	NO
USB Charging Port	Control Box
Battery Backup	NO
Place of Origin	USA

SmartTek Diagnostic System STANDARD on all Golden models.



# TWILIGHT

The World's Most Advanced  
Power Positioning Lift Recliner  
with Patented Twilight Technology!



Shown in Bourbon

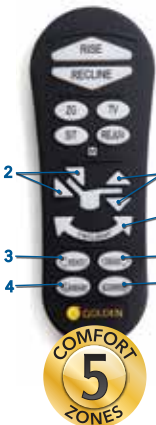
### HEALTHY BENEFITS:

- Elevates Feet Above Heart
- Supports Natural 'S' Shape of Spine
- Alleviates Pressure On Lungs
- Distributes Weight
- Relieves Pressure Points
- Encourages Proper Posture
- Stylish New Track Arm Design
- Available in Luxurious Brisa® Fabrics With Breathable Technology

## Comfort Zone™

by GOLDEN

**Comfort Zones 1 - 5** This positioning system incorporates all five adjustable comfort zones to create the ultimate wellness comfort experience with our patented Twilight Technology. Each Comfort Zone can be adjusted independently by using the exclusive AutoDrive™ hand control.



**WE PATENTED COMFORT™**



Scan with your smartphone camera to learn more about Comfort Zone by Golden.



Phone: 800-624-6374  
Fax: 800-628-5165  
www.goldentech.com



Literature is current at time of printing. Golden Technologies reserves the right to make changes to the product or literature at any time.

Sizes may vary depending on fabric, filling material, upholstery and carpet thickness. All measurements taken on concrete floor using levels and metal rulers.



Complies with  
UL 73 and  
CSA C22.2 No. 68



www.facebook.com/goldentechnologies

SHT-PR761-031021